

Leica ScanStation Pxx Pxx Simulator

v2.0

- when it has to be **right**

www.rusgeocom.ru

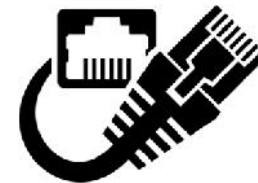
Leica
Geosystems

Leica ScanStation Pxx Pxx Simulator



Prerequisite

- Leica ScanStation Pxx with FW 2.70 or higher installed
- Windows computer with Pxx Simulator installed
- Ethernet cable or WiFi connection



Leica ScanStation Pxx Pxx Simulator



What it is

- **The Pxx Simulator is a free-of-charge, standalone tool to**
 - Simulate the control of a virtual scanner (e.g. for training purposes)
 - Control a physical scanner remotely via a Windows computer
 - Store scan data directly on the connected computer
 - Control multiple scanners in parallel via a Windows computer

Leica ScanStation Pxx Pxx Simulator



Where to download

- Download the installer from
 - Leica myWorld
 - USB stick delivered with the instrument

Good Morning Peter Gluck myProfile Logout

my world | Leica Geosystems ENGLISH

myApplications myPartnership

myApplications > myDownloads

My Downloads

Back Help

ScanStation P30/40
Downloads of Software, Manuals, Tools, Training Material and News for ScanStation P30/40

Software for ScanStation P30/40

Release No: 2.5 Sort by: Defined Order

	ScanStation P30/P40 Firmware Official Firmware Upgrade including Release Notes.	V2.50 15.25 MB ZIP 07.01.2016	Download
	ScanStation P30/P40 Language Files Loadable file, which enables the user to switch the language of the instrument's user interface. Also referred to as system language.	V2.50 105 KB 07.01.2016	Download Chines
	Leica ScanStation P30/P40 Simulator Installer for the ScanStation P30/P40 Simulator	V2.50 3.77 MB ZIP 07.01.2016	Download
	ScanStation P30/P40 Remote Control Pxx_RemoteControlCAB must be installed on the CS10/CS15 controller for wireless remote control of the ScanStation P30/P40.	V2.50 335 KB 07.01.2016	Download
	ScanStation P30/P40 Remote Control CS20 CS20 ScanStation Pxx_RemoteControlCAB must be installed on the CS20 controller for wireless remote control of the ScanStation P30/P40.	V1.30 331 KB 07.01.2016	Download

Leica ScanStation Pxx Pxx Simulator



Installation

- Unzip Pxx Simulator 2.70.yyy.zip
- Start Setup.exe
- Follow the instructions in the **Pxx Simulator Setup Wizard**
- Select **Yes** for inbound rules of port 10000 and 10001

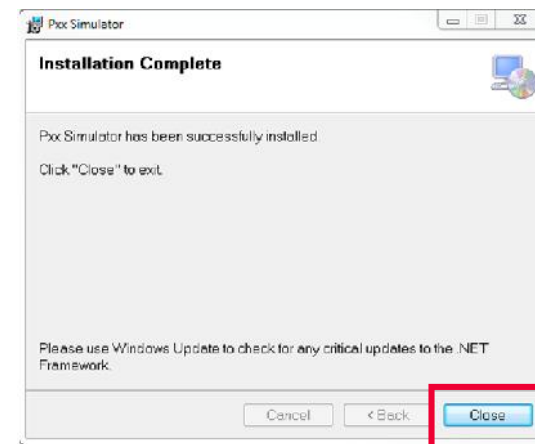
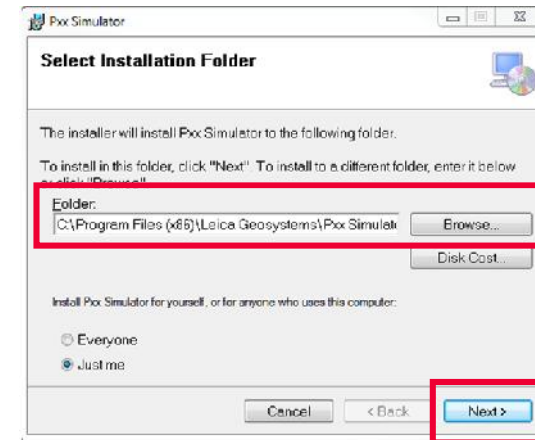
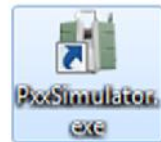


Leica ScanStation Pxx Pxx Simulator



Installation cont'd

- Select the folder for the installation
- Close the wizard after successful installation
- After installation a shortcut **Pxx Simulator.exe** is available on the desktop

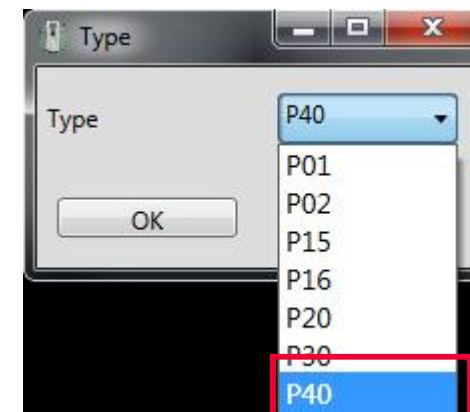
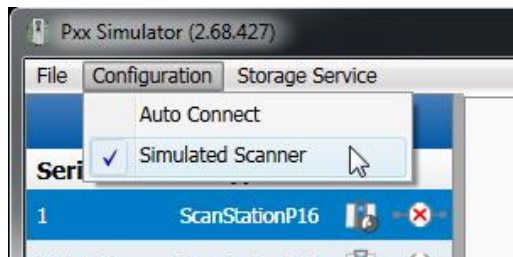
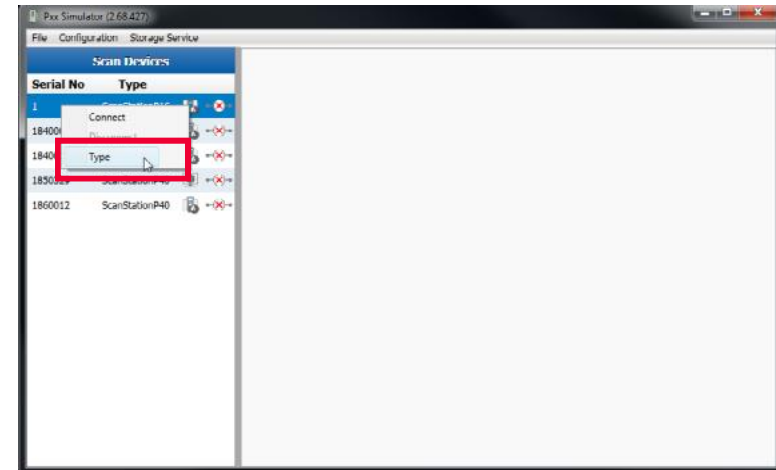


Leica ScanStation Pxx Pxx Simulator



Virtual scanner control

- Start the shortcut PxxSimulator.exe
- In Scan Devices panel right click on virtual scanner with serial number 1 and select Type
- In Type window select the scanner type of your virtual Pxx scanner
- Select Configuration, Simulated Scanner to hide/display the virtual scanner from/to the list of scanners in the Scan Devices panel

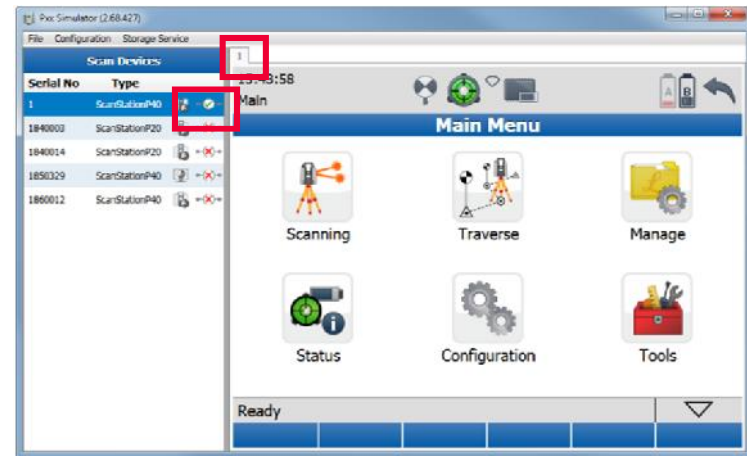
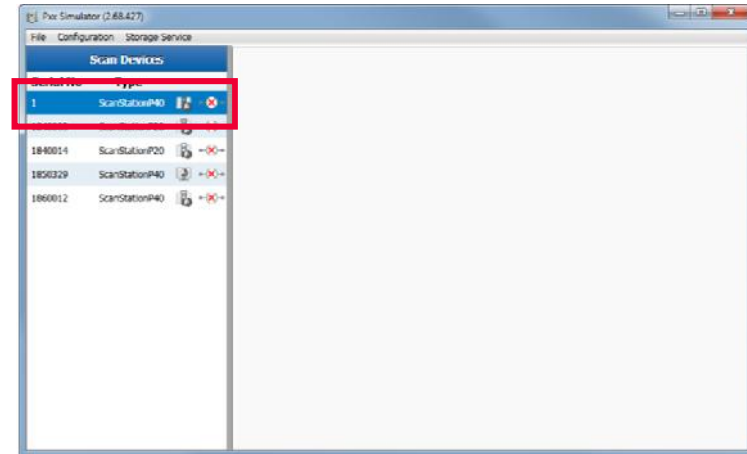
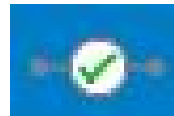


Leica ScanStation Pxx Pxx Simulator



Virtual scanner control cont'd

- In **Scan Devices** double click on the virtual scanner (serial number \neq 18xxxxx)
- Or right click and select **Connect**
- Test the user interface of the virtual scanner without a physical scanner being connected
- Check for serial number in the tab and the connection status in the **Scan Devices** panel

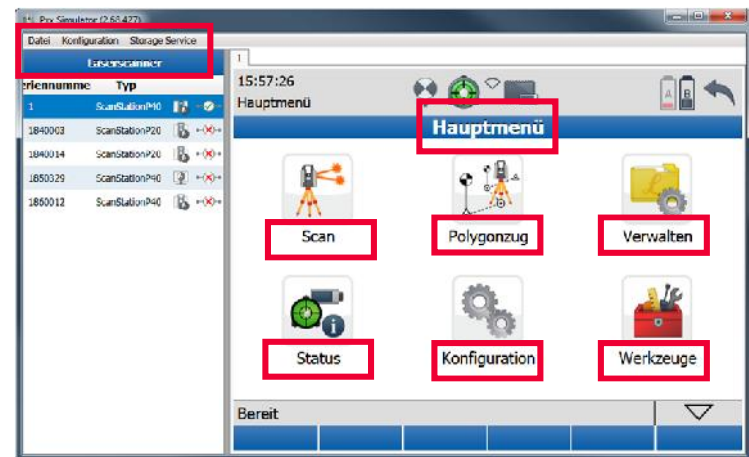
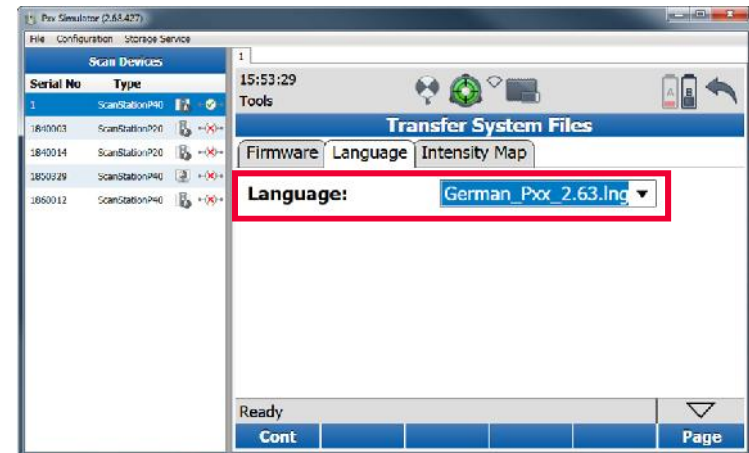


Leica ScanStation Pxx Pxx Simulator



Virtual scanner control cont'd

- Copy a language LNG file to C:\ProgramData\Leica.Scanning\Usb System
- In Tools, Transfer, SystemFiles select the Language in the Language tab and press Cont
- The MMI and commands of the simulator are then translated with the selected language



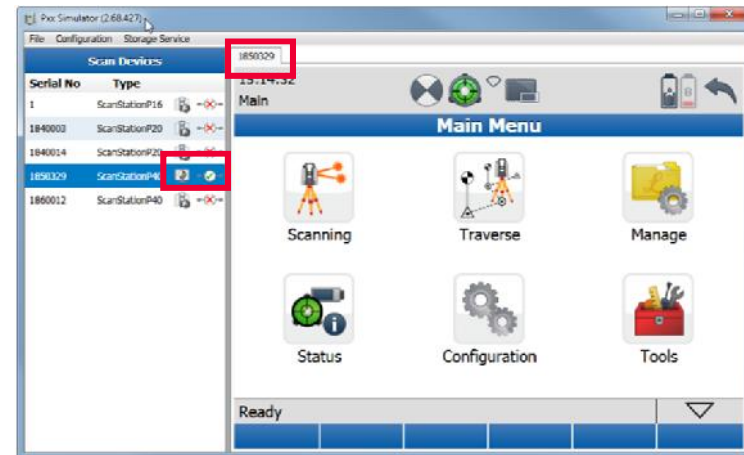
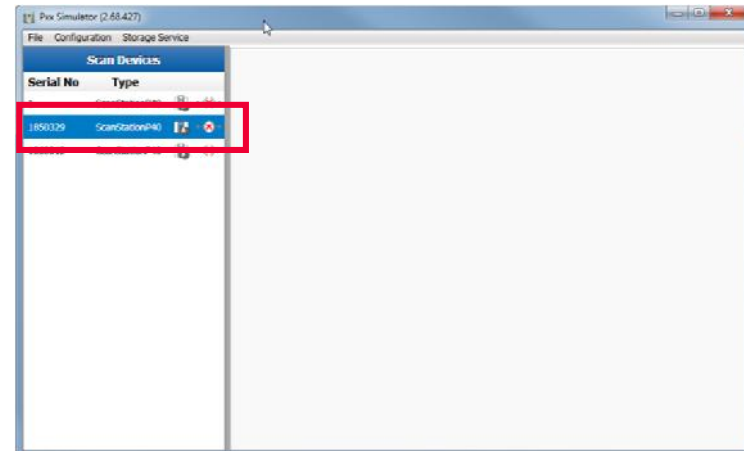
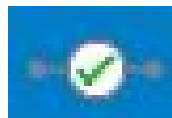
Leica ScanStation Pxx Pxx Simulator



Physical scanner control

- Connect to a physical scanner via Ethernet cable or WiFi
- Start the shortcut PxxSimulator.exe
- In Scan Devices double right click on the physical scanner with serial number 18xxxxx
- Or right click and select Connect
- The user interface is now transferred from the onboard control to the simulator screen
- Check for serial number in the tab and the connection status in the Scan Devices panel


1850329

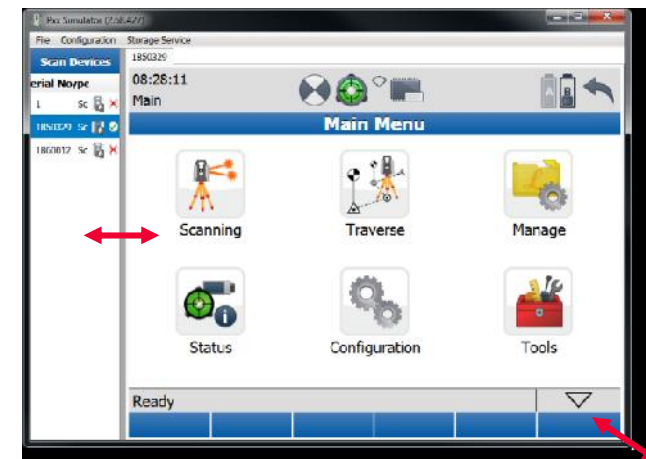
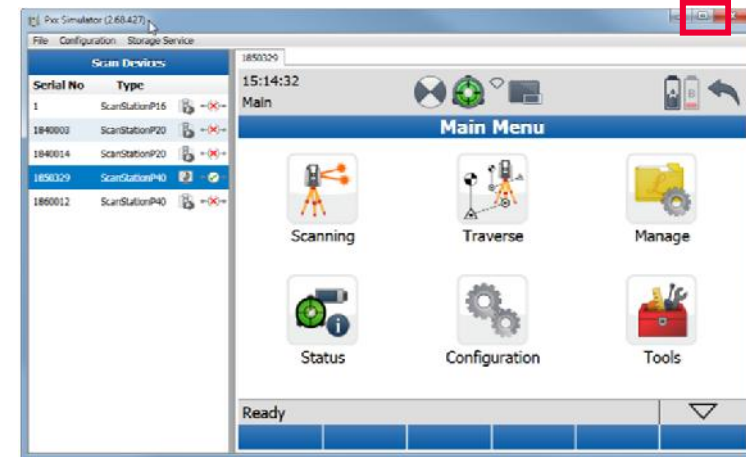


Leica ScanStation Pxx Pxx Simulator



Physical scanner control cont'd

- Control the connected scanner remotely via the simulator interface (same controls as with onboard screen)
- Enlarge the display to full screen resolution with the Enlarge button  or drag and change to any size
- Drag the vertical separator to change the size of the Scan Devices panel

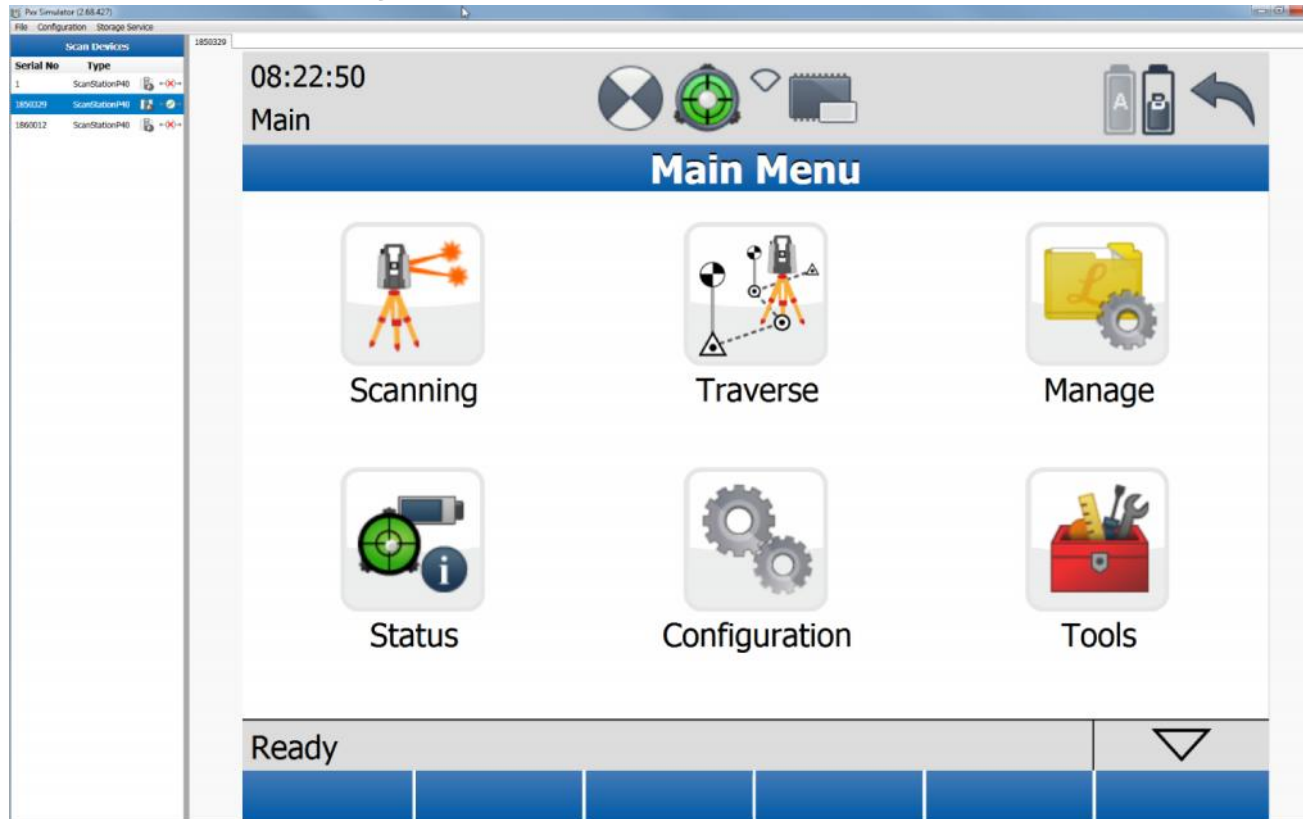


Leica ScanStation Pxx Pxx Simulator



Physical scanner control cont'd

- Full screen display

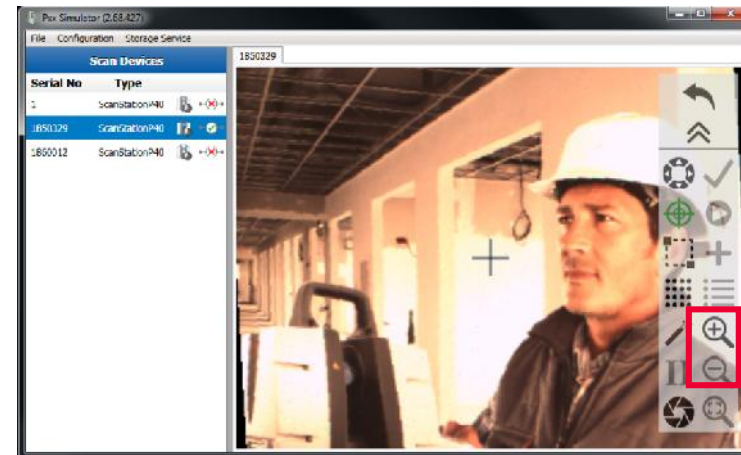
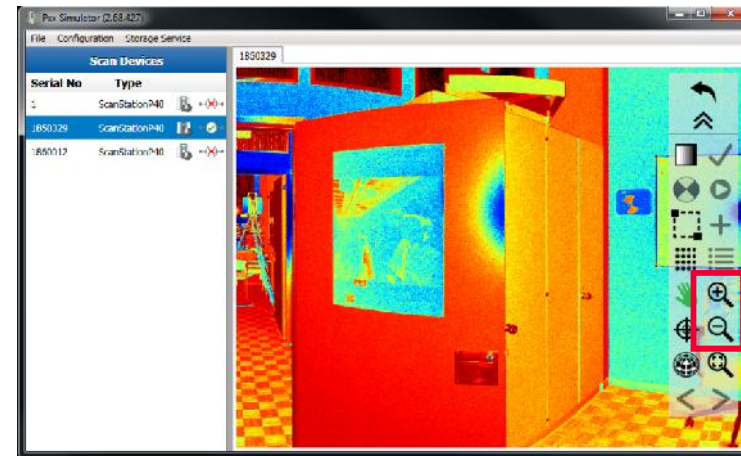


Leica ScanStation Pxx Pxx Simulator



Physical scanner control cont'd

- In the simulator screen use the mouse wheel to zoom in/out in a scan viewer
- In the simulator screen use the mouse wheel to zoom in/out in a camera viewer

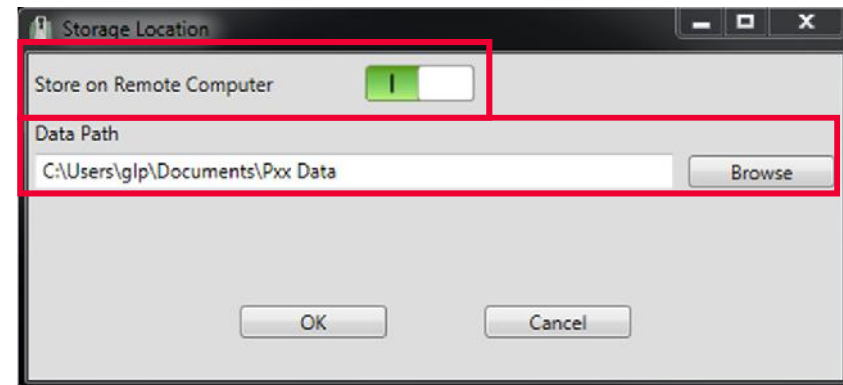
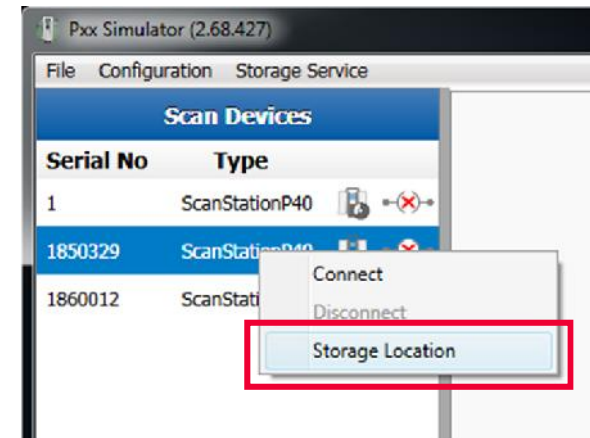


Leica ScanStation Pxx Pxx Simulator



Store scan data on remote computer



- Connect to a physical scanner via Ethernet cable or WiFi
- Start the shortcut PxxSimulator.exe
- In Scan Devices right click on a physical scanner and select Storage Location
- In Storage Location switch on Store on remote Computer and define the Data Path where to store the scan data
- All scan data is then streamed directly to the storage folder without any backup on the scanner's hard drive

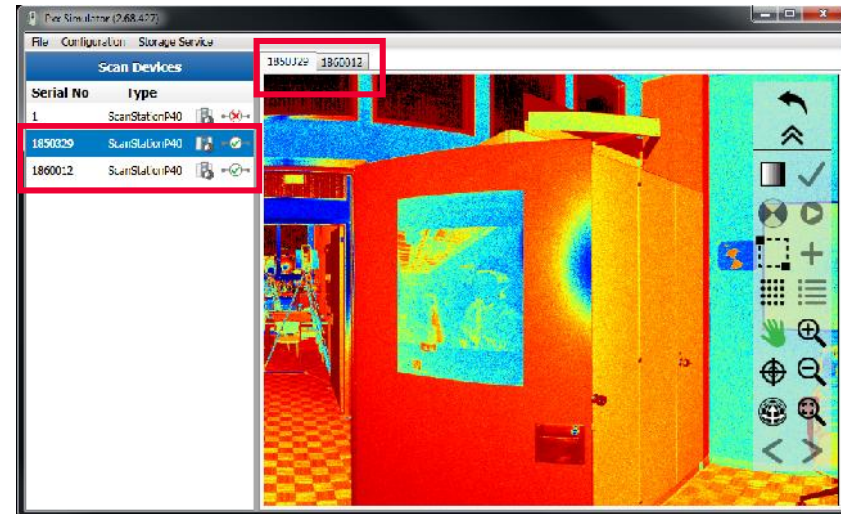


Leica ScanStation Pxx Pxx Simulator



Control multiple scanners in parallel

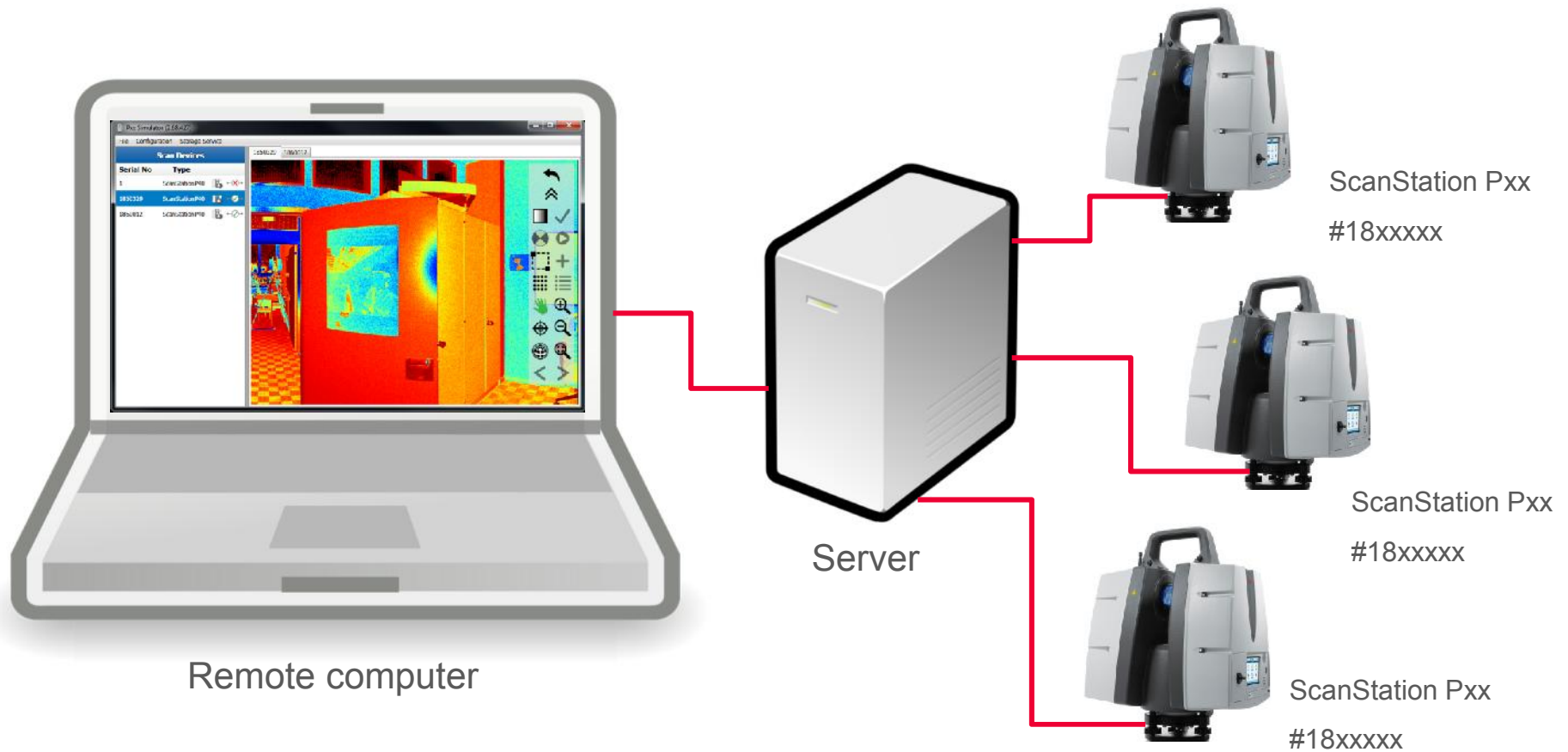
- Connect multiple physical scanner via
 - Server based network connection or
 - Direct connection via a switch
- Start the shortcut PxxSimulator.exe
- In **Scan Devices** connect multiple scanners
- Switch between connected scanners by clicking on the tabs with the serial numbers
- Data can be stored on
 - scanner  or
 - on remote computer 



Leica ScanStation Pxx Pxx Simulator



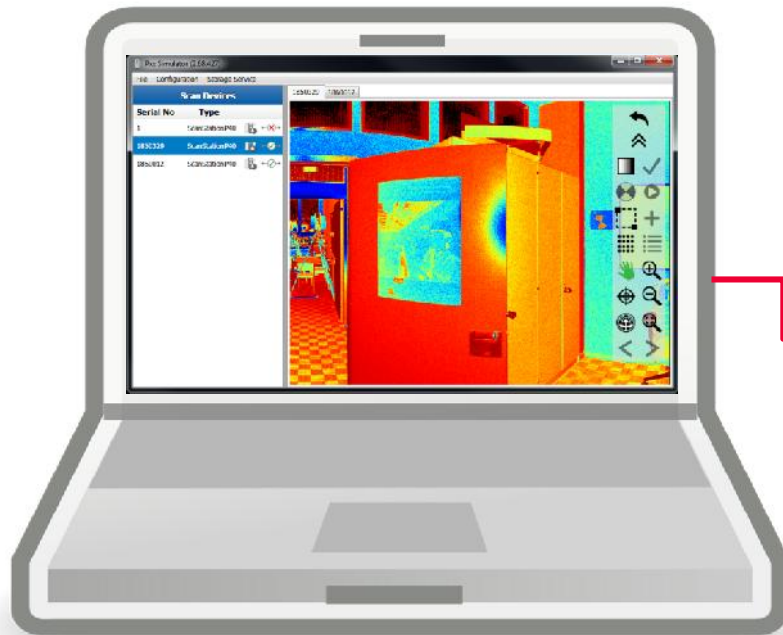
Control multiple scanners in parallel (network connection)



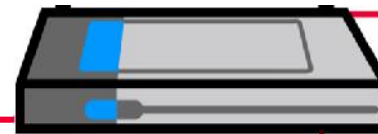
Leica ScanStation Pxx Pxx Simulator



Control multiple scanners in parallel (direct connection via switch)



Remote computer



Switch



ScanStation Pxx
#18xxxxx



ScanStation Pxx
#18xxxxx



ScanStation Pxx
#18xxxxx